

ERGOLINE single discs 17" - 154 rpm

Models with working width of 430 mm, the effective combination of motor - weight - speed, makes this machine suitable for any cleaning task and restoration. Very strong induction motor for long lifetime and great performances. Double protection against unintentional start. Satellite and planetary gearbox for high power transmission, long lifetime and low noise level. Handle of last generation, resulted of a perfect synthesis among great sturdiness, ergonomics, safety and innovative design.

L10: basic model versatile and easy to use.

L13: version with stronger motor for more demanding and harder works.

L16: with special high efficient motor for using the machine with special accessories like additional weight, sanding papers or for grinding/scarifying.

L22: Model with working width of 430 mm, with a 3 HP power remarkable motor, allowing its use in super-professional fields.



PRODUCT IDENTIFICATION

TYPE	REF. NO.	PIECES/PALLET
SB 143 L 10	00-183EL-GH	16
SB 143 L 13	00-185EL-GH	16
SB 143 L 16	00-190EL-GH	16
SB 143 L 22	00-187EL-GH1	16

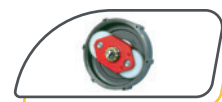
TECHNICAL DATA

FEATURES

Working width - Ø brush	mm	430
Brush speed	rpm	154
Voltage	V	220 - 240
Frequency	Hz	50
Brush motor rating	W	1000/1300/1600/2200
Brush contact pressure	g/cm ²	40,3 - 40,8 - 41,3 - 45,3
Under-ride height	mm	330/360 (L10, L13, L16/L22)
Dust pick-up attachment		yes
Noise level	db(A)	< 54
Transmission		Planetary gear box
IP code		IPX4
Power supply cable	m	12/15 (L10, L13/L16, L22)
Weight (without accessories)	Kg	41/41,5/42/46
Dimensions	mm	1200x542x430

OPTIONAL ACCESSORIES

TYPE	REF. NO.
Pad holder 17"	00-240
Scrubbing brush mm 0,6 - 17"	00-241
Carpet brush 17"	00-243
Tynex scrubbing brush 17"	00-246
Sanding pad holder 16"	00-253
Tank Ergoline 12 l	00-330
17" extra weight 10 Kg	14-113



PLANETARY GEAR



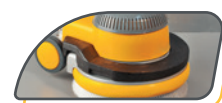
PLANETARY GEAR (L22)



ARTICULATION OF THE HANDLE



MOUNT FOR DRIVE BOARD AND BRUSHES



EXTRA WEIGHT (OPTIONAL)



TANK 12 L (OPTIONAL)



SUCTION KIT (OPTIONAL)



NEW PLASTIC COVER (L22)