

POWER EXTRA 31 I

Spray-extraction cleaners

Power Extra 31 is the top model of the range, suitable for every kind of application and cleaning task. Versatility and max performance (twin vac motors), declined and diversified in three versions, all with the classic stainless steel tanks. The standard version consists of a 3 m hose (Ø 40), the spray-ex upholstery tool and the spray-ex floor tool; this model is available either with the standard Ulka pump (48 W power, 1,1 l/min water spray rate, 7 bar pressure) or with the Ceme one (60 W power, 4,5 l/min water spray rate, 6 bar pressure). The Auto version (equipped with Ceme pump too) comes with spray-ex upholstery tool and above all with the 6 m spray-ex hose, perfect for the car interiors and for every hard to reach areas. 31 liters solution tank, easy to fill thanks to the filling port. 32 liter recovery tank, it can be easily drained either using the practical drain hose or removing the whole tank and emptying it. Separated pump control.



PRODUCT IDENTIFICATION

TYPE	REF. NO.	PIECES/PALLET
POWER EXTRA 31 I ULKA	14524010002	2
POWER EXTRA 31 I CEME	14524010001	2
POWER EXTRA 31 I Auto CEME	14534010001	2

TECHNICAL DATA

FEATURES

Voltage - Frequency	220-240 V~	50/60 Hz
Max power rating	W	2500
Rated power (nominal power)	W	2200
Cleaning solution tank	l	31
Useful capacity for dirty water	l	32
Air flow rate	l/s	142
Vacuum	mbar	225
Pressure	bar	7 (ULKA)/6 (CEME)
Noise level	db(A)	82
IP code		IPX4
Power supply cable	m	10
Weight (without accessories)	Kg	26,5
Dimensions	mm	960x630x550

STANDARD ACCESSORIES Ø 40

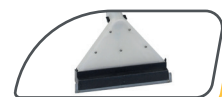
TYPE	REF. NO.
Hand spray-ex tool Ø 40	6935710
Flexible hose 3 m (*)	6493150
Spray-ex floor tool Ø 40 (*)	6935730
Flexible hose 6 m (**)	6493151
Nylon protection filter	3001016

OPTIONAL ACCESSORIES

TYPE	REF. NO.
Spray-ex floor alu tool	7180089



HAND SPRAY-EX TOOL



SPRAY-EX FLOOR TOOL



SPRAY-EX FLOOR ALU TOOL (OPTIONAL)



LARGE AND ROBUST FILLING PORT



NYLON PROTECTION FILTER



DRAIN SYSTEM



PRACTICAL AND EASY TO USE



IDEAL FOR EVERY TYPE OF TEXTILE SURFACE

(*) For Power Extra 31 I Ulka / Ceme version
(**) For power Extra 31 I Auto Ceme version