

## Dry vacuum cleaners

Vacuum cleaners with powerful and high efficiency New Generation motors. The I version is equipped with stainless steel container. Power brush socket, Hepa cartridge filter in option, accessories holder and exhaust air filters makes them very useful and universal for many different applications.



### PRODUCT IDENTIFICATION

TYPE	REF. NO.	PIECES/PALLET
POWER D 22 P	16551210001	18
POWER D 22 I	16564010001	18

### TECHNICAL DATA

#### FEATURES

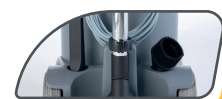
Voltage - Frequency	220-240 V~	50/60 Hz
Max power rating	W	1000
Rated power (nominal power)	W	800
Container capacity	l	22
Useful capacity	l	10
Useful dust bag capacity	l	7
Filtering surface	m <sup>2</sup>	0,11
Air flow rate	l/s	45
Vacuum	mbar	230
Noise level	db(A)	58
Power supply cable	m	10
Weight (without accessories)	Kg	8,5 (P) - 9,1 (I)
Dimensions	mm	500x380x485

### STANDARD ACCESSORIES Ø 36

TYPE	REF. NO.
Flexible hose 2,5 m	6010648
Chromed extension tube 0,5 m (*)	2511500
Dry floor tool D320	2511524
Upholstery tool	2511530
Crevice tool	2511520
Round brush	2511540
Fleece filter bag I 12	---
Textile filter	6610000

### OPTIONAL ACCESSORIES

TYPE	REF. NO.
Electric power brush (Ø 32/Ø 36 - L. 35 cm)	2512537
Oval brush	2512050
Cartridge filter (filtering surface 0,4 m <sup>2</sup> )	2512745
HEPA cartridge filter (filtering surface 0,4 m <sup>2</sup> )	2512747
Paper filter bag I 7 x 10	6650030
Nylon filter (Filtering surface 0,25 m <sup>2</sup> )	3001200
Fleece filter bag I 7 x 10	6614010
Fleece filter bag I 12 x 10	6614011



ACCESSORIES HOLDER



INLET AND OUTLET OF  
MOTOR COOLING AIR



PAPER FILTER BAG  
(OPTIONAL)



FILTER CAGE AND  
STANDARD FILTER

(\*) 2 on standard equipment