

GREEN PRO POWER WD 22 P

Wet & Dry vacuum cleaners

Wet/dry vacuum cleaner made of recycled plastic material equipped with a new generation motor, the perfect combination of sustainability, high efficiency and power. This model is equipped with the innovative UFS (Ultra FilteRing System) filtering system, which, thanks to the special polypropylene spacer ring, allows the cartridge filter (class M) to remain installed at all times, ensuring optimal suction performance and maximum protection for the motor (even in case of incorrect use by the operator). UFS is also practical: cleaning and maintenance of the floating system, which is independent from the motor head and attached directly to the ring, is immediate, simple and intuitive. Equipped with accessory housings and exhaust air filter. Optional paper, nylon, fleece and HEPA cartridge filters.



PRODUCT IDENTIFICATION

| TYPE | REF. NO. | PIECES/PALLET |
|-------------------------|-------------|---------------|
| GREEN PRO POWER WD 22 P | 14657810500 | 18 |

GREEN GREEN DATA

FEATURES

| | | |
|----------------------------------|----------------------|------|
| Recycled plastic | % | 24 |
| Noise level | db(A) | 60 |
| Energy consumption per m² | Wh/m² | 3,67 |
| CO ₂ emissions per m² | gCO ₂ /m² | 1,22 |

PRO TECHNICAL DATA

FEATURES

| | | |
|--------------------------------------|------|---------------------|
| Voltage - Frequency | | 220-240 V~ 50/60 Hz |
| Max power rating | W | 1250 |
| Rated power (nominal power) | W | 1100 |
| Container capacity | l | 22 |
| Useful capacity | l | 11 |
| Useful dust bag capacity | l | 7 |
| Filtering surface | m² | 0,19 |
| Filtering surface (cartridge filter) | m² | 0,5 |
| Air flow rate | l/s | 71 |
| Vacuum | mbar | 235 |
| Power supply cable | m | 10 |
| Weight (without accessories) | Kg | 11,3 |
| Dimensions | mm | 500x380x590 |

STANDARD ACCESSORIES Ø 36

| TYPE | REF. NO. |
|--|----------|
| Flexible hose 2,5 m | 6010648 |
| Chromed extension tube 0,5 m (*) | 2511500 |
| D 320 Dry floor tool | 2511524 |
| D 300 Squeegee tool | 2511526 |
| Upholstery tool | 2511530 |
| Round brush | 2511540 |
| Crevise tool | 2511520 |
| Textile filter | 6656000 |
| PTFE cartridge filter (M filtration class) | 2512741 |

OPTIONAL ACCESSORIES

| TYPE | REF. NO. |
|--|----------|
| Oval brush | 2512050 |
| Antifoam device | 6200150 |
| Nylon filter (filtering surface 0,46 m²) | 3001210 |
| Nylon protection filter | 3001009 |
| HEPA cartridge filter (filtering surface 0,5 m²) | 2512760 |
| Paper filter bag l 7 x 10 | 6650030 |
| Fleece filter bag l 7 x 10 | 6614010 |
| Fleece filter bag l 12 x 10 | 6614011 |



24% RECYCLED PLASTIC



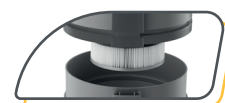
HIGH EFFICIENCY MOTOR



TEXTILE FILTER



ULTRA FILTERING SYSTEM



PTFE CARTRIDGE FILTER
(M FILTRATION CLASS)



ENGINE COOLING AIR
INLET AND OUTLET



ACCESSORIES HOLDER



PAPER FILTER BAG
(OPTIONAL)

(*) 2 on standard equipment