

**ghibli & wirbel**

Professional Cleaning Machines Since 1968

# RANGER 115



**THE POWERFUL AND RELIABLE RIDE-ON SCRUBBER DRYER  
THAT COMBINES PRACTICALITY AND HIGH PERFORMANCE.  
RANGER, IN NAME OF COMFORT AND ERGONOMICS,  
MAKES CLEANING ITS MISSION!**

# RANGER FAMILY



**RANGER R 115 FD 75 CHEM**

75 cm twin brushes,  
basic version  
(without batteries and battery charger)



**RANGER R 115 FD 75 BC CHEM**

75 cm twin brushes,  
Gel battery set (4 pcs) 6V 240Ah +  
24V 30A battery charger  
on standard equipment



**RANGER R 115 FD 75 BC CHEM PLUS**

75 cm twin brushes,  
Pb Wet battery 24V 320Ah +  
24V 30A battery charger  
on standard equipment

**PRODUCT IDENTIFICATION**

TYPE	REF. NO.
RANGER R 115 FD 75 CHEM	10.0715.00

TYPE	REF. NO.
RANGER R 115 FD 75 BC CHEM	13.0715.00

TYPE	REF. NO.
RANGER R 115 FD 75 BC CHEM PLUS	17.0715.00



**RANGER R 115 FD 85 CHEM**

85 cm twin brushes,  
basic version  
(without batteries and battery charger)



**RANGER R 115 FD 85 BC CHEM**

85 cm twin brushes,  
Gel battery set (4 pcs) 6V 240Ah +  
24V 30A battery charger  
on standard equipment



**RANGER R 115 FD 85 BC CHEM PLUS**

85 cm twin brushes,  
Pb Wet battery 24V 320Ah +  
24V 30A battery charger  
on standard equipment

**PRODUCT IDENTIFICATION**

TYPE	REF. NO.
RANGER R 115 FD 85 CHEM	10.0815.00

TYPE	REF. NO.
RANGER R 115 FD 85 BC CHEM	13.0815.00

TYPE	REF. NO.
RANGER R 115 FD 85 BC CHEM PLUS	17.0815.00



# RANGER R 115 FD 75/85

Ranger R 115 is the ride-on scrubber dryer designed for cleaning operations in medium and large areas that combines high level performance with ergonomics and maximum comfort for the operator. 115 liter capacity and wide cleaning widths starting from 750 mm up to 850 mm guarantee a productivity up to 5000 m<sup>2</sup>/h. The extra down pressure and detergent action (chemical mixing system) ensure excellent cleaning performance; the sturdy aluminium brush head is able to perfectly adapt itself to any obstacle and makes Ranger the ideal machine for cleaning closed to wall. The squeegee, with natural rubber blades supplied as standard, guarantees the best drying performance on every kind of surface. In the event of accidental impacts, the squeegee can also move and automatically retract under the machine frame, guaranteeing maximum safety and effectiveness.

The practical and intuitive control panel ensures the management of all the machine functions:

- it is possible to be immediately ready for the work session thanks the READY TO GO function which allows, by pressing a single button, the activation and setting of all the main functions of the machine;
- the ECO SYSTEM program optimizes consumptions and eliminates waste, making Ranger an eco-friendly machine.

Ranger is easy to use, no training is required and even daily maintenance operations are quick and easy. That is why even the untrained operators are able to work with this professional scrubber dryer. Available in six versions, two basics and four full package (two of which BC CHEM and two BC CHEM PLUS), with batteries and battery chargers included, Ranger can reach up to 7 hours running time in the BC CHEM PLUS version!



## TECHNICAL DATA

FEATURES		FD 75	FD 85
Cleaning width	mm	750	850
Squeegee width	mm	950	1050
Productivity (theoretical - practical)	m²/h	4500 - 2700	5000 - 3000
Power supply		Battery 24V	
Installed power	W	2300	
Advancement		with traction	
IP code		IPX3	
BATTERIES			
Type		Gel battery set (4 pcs) 6V 240Ah (*) - Pb Wet battery 24V 320Ah (**)	
Running time	h - min	5 h (*) - 7 h (**)	
Battery compartment dimensions x No	mm X nr	380x625x440 X 1	
BRUSHES			
Pad diameter x No	mm - inch x nr	380 - 15" x 2	430 - 17" x 2
Motor rating x No	W x nr	500 x 2	
Motor speed	rpm	165	
Down pressure - Contact pressure	Kg - g/cm²	35;70 - 21;43	37;72 - 17;34

## TRACTION

Motor rating	W	600
Driving speed	Km/h	6
Hill climbing ability (full load)	%	2
Hill climbing ability (empty)	%	12

## VACUUM

Motor rating	W	550
Vacuum	mbar - mH <sub>2</sub> O	125 - 1250
Airflow rating	l/s	30
Noise level	dB(A)	67/59 (***)

## TANK

Type		Double tank	
Cleaning solution tank	l	110	
Recovery tank	l	115	
Weight (empty/with batteries)	Kg	246 - 432 (*) - 506 (**)	
Dimensions	mm	1470 x 950 x 1365	1470 x 1055 x 1365

(\*) For BC CHEM version

(\*\*) For BC CHEM PLUS version

(\*\*\*) Silent mode function

# RANGER, WATCHING OVER CLEANING!



The 115 liter capacity, combined with Ranger's innovative technical features, make it a powerful, reliable and safe machine for use in medium-large environments.

The same remarkable performance of bigger size ride-on scrubber dryers comes with a modern and impactful design. Everything is conceived to make this machine compact and extremely handy.

A mix of distinctive elements that makes Ranger the ideal solution to operate in medium and large areas, even congested, ensuring maneuverability, practicality and comfort.



**Two cleaning paths**, thanks to the 75 and 85 cm twin brush heads, to adapt to any type of environment, from cleaning medium and large areas to heavy and long lasting working sessions.



The large **capacity of the solution tank** (up to 110 liters) along with the electronic water regulation, allow to work continuously without refilling and emptying too frequently.



# RANGER, EXCELLENT PERFORMANCE!

## HIGH PRODUCTIVITY

The adjustable speed up to 6 km/h allows Ranger to reach a productivity of 4500 m<sup>2</sup>/h for the FD 75 models and 5000 m<sup>2</sup>/h for the FD 85 ones, allowing a considerable saving in the hourly cost of cleaning operations.

## REMARKABLE RUNNING TIME

The wide range of models allows the operator to choose the most suitable solution for several working needs. In particular, in addition to the basic models, the availability of four full package versions (two BC and two BC PLUS), with batteries and chargers included, guarantees different working time: from the five hours of the BC versions (with 6V 240Ah battery set) up to seven hours of non-stop work of BC PLUS versions (24V 320Ah Pb Wet battery). Ranger can be recharged easily thanks to the practical 30A on-board charger on standard equipment: 10 hours for the BC models and 13 hours for the BC PLUS models.



## ...IN A COMPACT AND MANAGEABLE RIDE-ON!



Unsurpassed in cleaning close to wall, thanks to the automatic return of the brush head and the squeegee in the event of accidental collisions, it can move without problems even in the most difficult environments.

The real element that makes this scrubber dryer unique is the combination of productivity and maneuverability. Ranger, in fact, is able to guarantee high performance even on large and congested surfaces that are more complex to clean.

# INNOVATION...

THE PRACTICAL AND INTUITIVE CONTROL PANEL ENSURES THE MANAGEMENT OF ALL THE MACHINE FUNCTIONS



## READY TO GO

The function that allows Ranger to be immediately ready for the work session. By pressing a single button, it is possible to activate and to set suction, brush head group, water and chemical mixing system.



## ECO SYSTEM

By pressing the ECO button all the previously selected working parameters (water, chemical concentration, suction power and brush pressure) are reduced for maximum optimization of consumption. Ecology and savings in all working conditions!



## EXTRA DOWN PRESSURE

Ideal for dealing with any type of dirt, even the most stubborn one.



## SILENT MODE

Necessary for day cleaning and for work in "sensitive" areas (hospitals, retirement homes, schools).





# AND CONTROL

RANGER IS EVEN EASIER TO USE THANKS TO THE ARRANGEMENT OF THE BUTTONS ON THE DASHBOARD.



## MOTION CONTROL

Thanks to the practical buttons placed in a convenient position to reach, speed and direction adjustment are electronically managed in order to always have the machine movements under control.



## ELECTRONIC WATER REGULATION

Five selectable levels allow the operator to use the amount of water suitable for each situation.



## CHEMICAL MIXING SYSTEM

The operator can manage the right chemical dosage according to the type of floor and dirt: the percentage of detergent, in fact, can be easily selected from five levels available.



## BRUSHES AND SUCTION

These two buttons, in addition to the activation of brush group and the suction motor, allow to manage the lifting of the head brush and the squeegee thanks to specific actuators.



## IMMEDIATE FEEDBACK

The digital display allows a precise and constant control of Ranger activities. The status of all functions is displayed on the screen. Even the battery icon, that is present on the display, allows a constant and immediate feedback of the state of charge during work.



# QUALITY MADE IN G&W

# TOP PERFORMANCE AND RESULTS!

**RANGER DEALS WITH ANY CLEANING CHALLENGE AND SIMPLIFIES WORKING DAYS.**

## CLEANING

The machine (front driven) comes with two versions of twin brush head to meet any operator need. Two 15" brushes in the FD 75 version and two 17" brushes in the FD 85 version guarantee maximum coverage and washing efficiency, even in narrow spaces. In addition, the possibility to choose among a wide range of brushes, with bristles of different sizes (thicker polypropylene or tynex), pad holders and optional pads, allows the operator to tackle any type of dirt with excellent cleaning results.



### 2 MOTORS

500 W of power for each brush that, thanks to the counter-rotating movement, makes possible the removal of the most stubborn dirt without any effort.

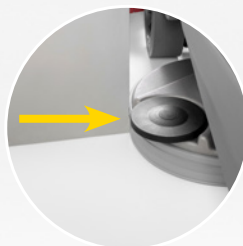
### TWIN BRUSHES-DECK SYSTEM

**Made of aluminium:** shock proof and corrosion resistant

**Retractable:** able to adapt perfectly to any obstacle, making Ranger incomparable in cleaning close to wall

### SPLASHGUARD

To better protect the most vulnerable parts of the machine and the work environment.



### EXTRA DOWN PRESSURE

Simply press a button to allow Ranger to remove any kind of dirt! Thanks to this function it is possible to increase the weight on the brushes up to 72 kg (850 mm cleaning path).



### CHEMICAL MIXING SYSTEM

The automated detergent dispensing system is managed directly from the control panel. It allows to select the right chemical percentage according to the type of dirt. The detergent tank is easy to install and replace when necessary and extremely easy to connect to the dosing system.



## DRYING

Compact and reactive, the squeegee naturally adapt itself to the movements of the machine following the head brush. Available in two widths (950 and 1050 mm) it guarantees perfect drying results on any type of surface, even when cornering.

### VAC MOTOR

Highly performing: 550 W, 3 stage, ensures excellent drying results.

### SQUEEGEE GROUP

**Made of aluminium:** shock proof and corrosion resistant

### NATURAL RUBBER BLADES

On standard equipment, unrivalled on maintenance cleaning and on floors with the most stubborn dirt.



## RELIABILITY

In case of accidental shocks, the squeegee is able to move and automatically re-enter under the machine frame, ensuring ease of action.

## SILENT MODE FUNCTION

It allows Ranger to be quieter, while maintaining high performance.  
Ideal for daily operations and cleaning in environments where it is recommended to work with a low noise level.



# TOP PERFORMANCE AND RESULTS!

RANGER DEALS WITH ANY CLEANING CHALLENGE AND SIMPLIFIES WORKING DAYS.

## SAFETY

EVERYTHING HAS BEEN DESIGNED  
TO ENSURE MAXIMUM PROTECTION  
FOR THE OPERATOR

Emergency button for interruption of all  
activities in case of risk situations.

Front and rear polyurethane wheels:  
non-slip and non-marking, they ensure  
perfect stability and roadholding.

Automatic speed  
reduction  
on cornering  
at too high speeds.



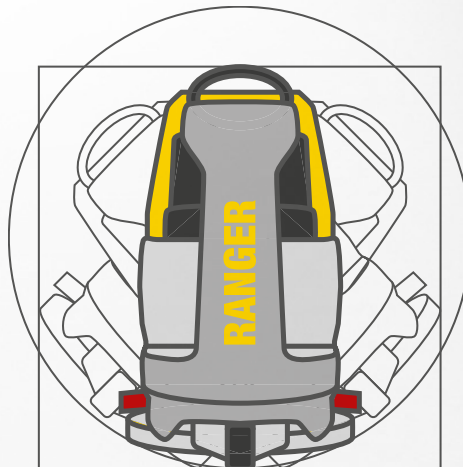
Perfect sight line both during transport and work.





## ERGONOMICS AND COMFORT

MODERN AND REMARKABLE DESIGN  
TO ADAPT TO OPERATOR'S NEEDS



The comfortable seat perfectly hosts the operator allowing him to work in a stable and ergonomic position: at the right distance from the steering wheel, it is ideal during long and heavy working sessions.

### LIGHT STEERING

Responsive but comfortable to offer maximum driving accuracy.



The control panel is compact and practical. The positioning of the buttons is intuitive and ensures immediate interaction with the machine.

85 cm

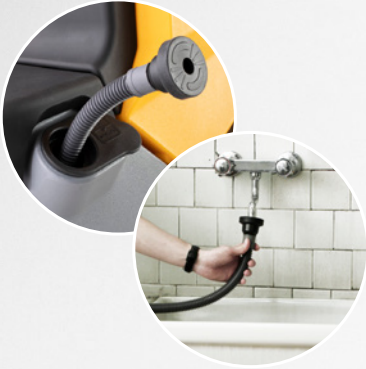
37 cm

The sturdy non-slip footboard is placed at a proper height and makes it easy and safe to climb on board.

# EASY PREPARATION AND ORDINARY MAINTENANCE

RANGER'S DAILY MAINTENANCE IS EXTREMELY SIMPLIFIED

## TANKS



Fast filling of the solution tank thanks to the extendible filling hose on standard equipment.



Water Stop: fast filling of the solution tank with automatic stop (optional).



Recovery tank easy to drain.



Recovery tank at low height: immediate access and cleaning.

## FILTERS



**SUCTION FILTER**  
easy to reach and clean.

**DEBRIS TRAY WITH CAP**  
the practical container that retains large debris. Immediate removal and emptying.

## BRUSH HEAD

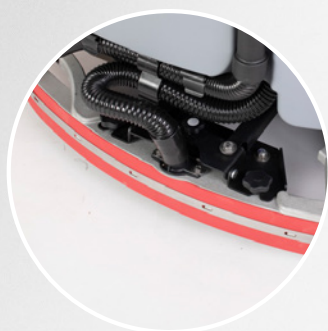


Immediate access to the brush deck: brushes (or optional pad holders) easy to install/remove.



## **SQUEEGEE**

**EASY TO INSTALL AND REMOVE**

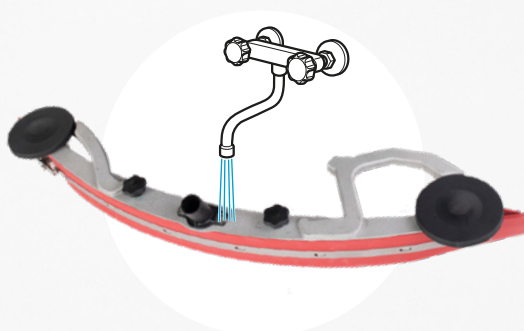


The squeegee can be easily installed or removed thanks to two handy knobs (no tools needed).

### **RUBBER BLADES CAN BE:**



Easily removed thanks to the practical manual release system.



Simply cleaned.



Usable on four sides.

## **TRANSPORT...**



In order to facilitate transport and storage operations, Ranger is equipped with a practical support, placed on the recovery tank, to attach the squeegee: minimum space and ease of manoeuvre.

## **AND RECHARGE**



Even in this step, an immediate feedback of the state of battery charge is displayed on the screen.

# STANDARD ACCESSORIES



## FILLING HOSE

Extendible and equipped with universal coupling for all types of tap.



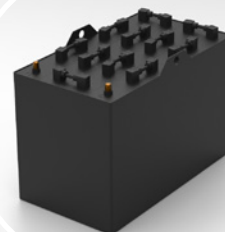
## POLYPROPYLENE BRUSHES 0,7 MM

Resistant and suitable for any type of surface thanks to the bristles with a diameter of 0,7 mm. Available with a diameter of 380 mm (15") and 430 mm (17").



## GEL BATTERIES 6V

Set of four Gel batteries 6V 240Ah able to guarantee 5 h running time. On standard equipment for BC version.



## PB WET BATTERY 24V

The Pb WET battery 24V 320Ah guarantees up to 7 hours of running time. On standard equipment for BC PLUS version.



## ON BOARD CHARGER

The batteries are easily chargeable in different places or distant, without having to go back to the same place (as standard in BC versions).



## NATURAL RUBBER SQUEEGEE BLADES

Highly resistant thanks to a greater adaptability to the ground, for the best drying performance.



## SPLASHGUARD

To protect the most sensitive parts of the machine and the working environment.



## CHEMICAL MIXING SYSTEM

Automated system for chemical dispensing.

## STANDARD ACCESSORIES

TYPE	REF. NO.	FD 75 CHEM	FD 75 BC CHEM	FD 75 BC CHEM PLUS	FD 85 CHEM	FD 85 BC CHEM	FD 85 BC CHEM PLUS
Solution tank filling hose	30.0024.00	•	•	•	•	•	•
15" Polypropylene brush Ø 0,7 (*)	40.0008.00	•	•	•			
17" Polypropylene brush Ø 0,7 (*)	40.0002.00				•	•	•
Splashguard	22.0713.00	•	•	•			
Splashguard	22.0714.00				•	•	•
Set natural rubber squeegee blades (front/rear)	96.0177.00	•	•	•			
Set natural rubber squeegee blades (front/rear)	96.0178.00				•	•	•
Gel battery set (4 pcs) 6V 240Ah	22.0718.00		•			•	
Battery 24V 320Ah	22.0723.00			•			•
On board battery charger 24V 30A	18.0089.00		•	•		•	•
Chemical mixing system	96.0179.00	•	•	•	•	•	•

(\*) Two brushes on standard equipment



# OPTIONAL ACCESSORIES



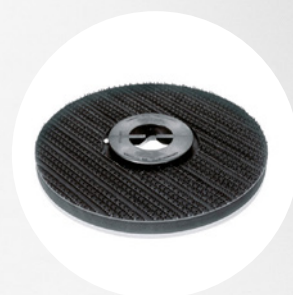
## POLYPROPYLENE BRUSHES 0,9 MM

Resistant and suitable for any type of surface.  
Available with a diameter of 380 mm (15") and 430 mm (17") and bristles with a diameter of 0,9 mm.



## TYNEX BRUSHES GRIT 240 AND 80

Ideal for cleaning rough surface with stubborn dirt.  
Available on request:  
- for FD 75 models with diameter of 380 mm (15"), grit 240 and bristles with diameter of 0.9 mm;  
- for FD 85 models with diameter of 430 mm (17"), grit 80 and bristles with diameter of 1.2 mm.



## PAD HOLDERS

For using the machine with the wide range of pads. Equipped with quick coupling/uncoupling system.



## WATER STOP KIT

Fast filling of the solution tank with automatic stop.



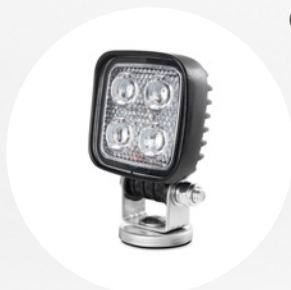
## CORNER DRYING KIT

For perfectly vacuum corners and the most difficult areas to reach.



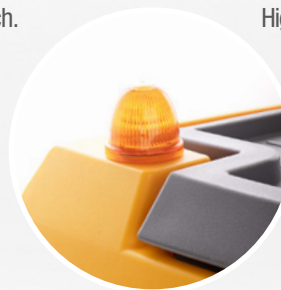
## SET POLYURETHANE SQUEEGEE BLADES

Highly resistant to wear and oils, suitable for any type of surface.



## HEADLIGHT KIT

LED headlight to ensure visibility during work in case of low light.



## BLINKING KIT

Maximum safety during working sessions.

## OPTIONAL ACCESSORIES

TYPE	REF. NO.	FD 75 CHEM	FD 75 BC CHEM	FD 75 BC CHEM PLUS	FD 85 CHEM	FD 85 BC CHEM	FD 85 BC CHEM PLUS
15" Polypropylene brush Ø 0,9	40.0108.00	•	•	•			
17" Polypropylene brush Ø 0,9	40.0102.00				•	•	•
15" Tynex brush Ø 0,9 grit 240	40.0208.00	•	•	•			
17" Tynex brush Ø 1,2 grit 80	40.0202.00				•	•	•
Pad holder 355 mm (for 15" pad)	40.1008.00	•	•	•			
Pad holder 420 mm (for 17" pad)	40.1007.00				•	•	•
Set polyurethane squeegee blades (front/rear)	96.0177.01	•	•	•			
Set polyurethane squeegee blades (front/rear)	96.0178.01				•	•	•
Headlight kit	96.0180.00	•	•	•	•	•	•
Blinking kit	96.0181.00	•	•	•	•	•	•
Corner drying kit	96.0182.00	•	•	•	•	•	•
Water Stop kit	96.0183.00	•	•	•	•	•	•

# RANGER R 115

## AT A GLANCE

