

## Industrial dry vacuum cleaners - three-phase

Large size industrial vacuum cleaner, silent and with a large filtration area. Three phase motor ( $\Delta = 400\text{ V} - Y = 690\text{V}$ ). Standard manual filter shaking system. Removable dry container. Blower. Motor thermo-protection. Turbine safety valve.



### PRODUCT IDENTIFICATION

TYPE	REF. NO.	PIECES/PALLET
AZ 45 400 V	19121208001	1

### TECHNICAL DATA

#### FEATURES

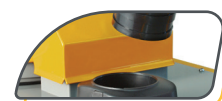
Voltage - Frequency	400 V <sup>3</sup> ~ 50 Hz	
Max power rating	W	5500
Rated power (nominal power)	W	5500
Container capacity	l	75
Useful capacity	l	55
Filtering surface	m <sup>2</sup>	0,3
Air flow rate	l/s	111
Vacuum	mbar	265
Noise level	db(A)	63
IP code		IPX3
Power supply cable	m	10
Weight (without accessories)	Kg	160
Dimensions	mm	780x480x1100

### STANDARD ACCESSORIES Ø 50

TYPE	REF. NO.
Flexible hose 3 m	6010712
Curved extension tube Ø 50	2511700
Adjustable dry tool 0,50 m	6010062
Round brush	2511720
Crevice tool	2511730
Connection Ø 50	2511710
Complete textile filter	6912000
Manual filter shaking system	---

### OPTIONAL ACCESSORIES

TYPE	REF. NO.
Adjustable dry brush 0,40 m	6010052
PVC extension tube 0,50 m	2512021
Nylon filter (Filtering surface 0,95 m <sup>2</sup> )	3001215



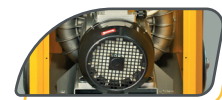
BLOWER



MANUAL FILTER SHAKING SYSTEM



FILTRATION SYSTEM



TURBINE